

# Entrer dans la mine

**03.10.2013 – 30.11.2013**

**An installation by Ângela Ferreira curated  
by Jürgen Bock for the 3rd Lubumbashi Biennial 2013  
(Democratic Republic of the Congo)**

Ângela Ferreira  
*Entrer dans la mine*, 2013  
Installation/performance, video (color, audio, 7'),  
wood, metal, fluorescent light, variable dimensions

Photo: Guy Tillim





Performance on 03.10.2013, singers: Isis Keto, Alain Lumbala Kazaku

It was the post-revolution artistic movement of the Russian constructivists in the 1920s that sought the unity of the social, the political and art. Western 'modernity', in which achievements in art and architecture were strongly driven by its notion of utopia regarding the emancipation of man, was imposed on the colonies in the 20th century through forms split off from the avant-garde discourses that instigated its forms in Europe.

The main component of Ângela Ferreira's installation in Lubumbashi is a 'modern' wood-light sculpture installed on top of the GPM gas station on Avenue Munongo in the 'colonial' centre of the city. The building designed by the Belgian architect Claude Strebelle is paradigmatic of an architecture that a number of European colonial powers introduced in the 1950s all over the African continent. Today the discussion on this architecture oscillates between notions of a 'shared heritage' and an 'architecture dissonante'.

In Ferreira's installation Strebelle's modernist architecture, with its carefully designed façade, becomes the plinth for her sculpture which in turn evokes Russian constructivist Vladimir Tatlin's (1885-1953) unrealized project for the *Monument to the Third International* in the Soviet Union (1919). Ferreira 'renders'

Tatlin's monument into a sculpture which explicitly quotes the monument's hallmark – the inclination of the earth's axial tilt of 23.4° – as a symbol for the universalism of unfulfilled utopian goals. By night the sculpture becomes a neon light/sign drawing its reference from Dan Flavin's homage series of works '*Monuments*' for V. Tatlin (1964-1990).

The sculpture was inaugurated with a performance presenting the poem/song 'Je vais entrer dans la mine' in the formerly dominant language Kibemba. The lyrics tell the story of a man writing to his mother about his fears that he will die having being forced to enter the mines. The filmed performance is on view during the course of the biennale on a screen installed in the shop window of the gas station (<http://www.youtube.com/watch?v=EUpp0bGnubw>).

A further project based on Ângela Ferreira's stay in the Democratic Republic of the Congo will be produced in Lubumbashi and Lisbon to be presented at the Lumiar Cité exhibition space in Spring 2014.

The Lubumbashi Biennial Rencontres Picha 2013 is curated by Elvira Dyangani Ose.

*Entrer das la Mine, 2013*

Sculpture publique / performance par Ângela Ferreira

Natuma kalata ku mushi  
Mayo mpelele ubunga  
Ndeya ingila umukoti (2x)  
Natuma kalata ku mushi  
Mayo umwana wenu  
Afwa pabula ukulwala (2x)

J'envoie une lettre au village  
Maman, mouds-moi de la farine  
Je vais entrer dans la mine. (2x)  
J'envoi une lettre au village  
Maman, votre fils,  
Est mort sans avoir être malade. (2x)

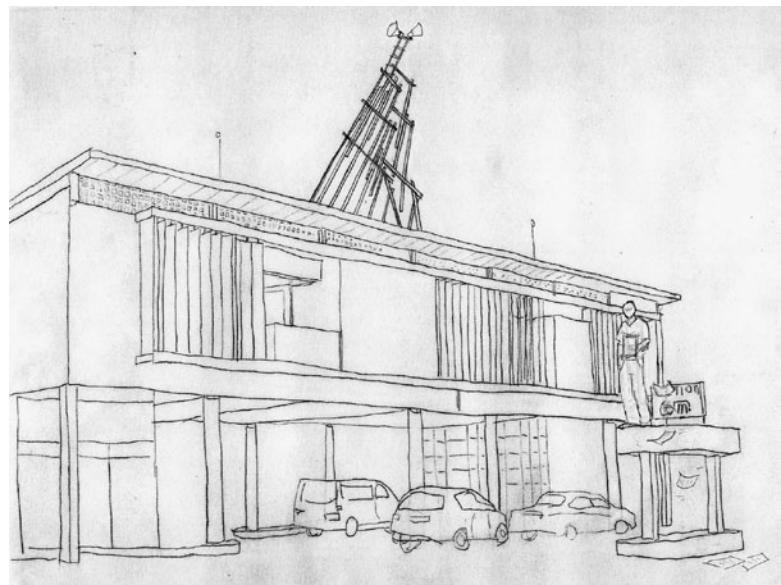
Interprétation par Isis Keto et Alain Lumbala Kazaku

Basée sur une chanson populaire trouvée dans les archives du Père Léon Verbeek à l'Institut supérieur de théologie St. François de Sales à Lubumbashi, elle décrit la lettre d'au revoir écrite par un jeune mineur à sa mère quand il était prêt à descendre dans la mine et probablement imaginant la peur de ce qu'il considérait comme sa mort prématurée. Selon le livre du Père Léon "L'histoire dans les chants et les danses populaire: la zone culturelle Bemba du Haut- Shaba (Zaire)", la chanson a été enregistrée à Kikula Mutima (Shindaika) par Kasunga Malitole (1944) le 23 Avril 1986 en Kibemba.

Based on a popular song found in the archives of Père Leon Verbeek at the Institut supérieur de théologie St. François de Sales in Lubumbashi, describing the goodbye letter written by a young miner to his mother when he was about to descend into the mine and probably picturing his fear of what he considers would be his premature death. According to Père Leon's book "L'histoire dans les chants et les danses populaire: la zone culturelle Bemba du Haut- Shaba (Zaire)", the song was first recorded by Kasunga Malitole (1944) in the Kibemba language in Kikula Mutima (Shindaika), on 23 April 1986.



GPM Gas Station  
72 Avenue Munongo – Lubumbashi  
Democratic Republic of the Congo



Ângela Ferreira, study for *Entrer dans la mine*, 2013,  
graphite on paper



Acknowledgements:  
Elvira Dyangani Ose, José António Fernandes Dias,  
Patrick Mudekereza, Johan Lagae, Sari Middernacht,  
Bodil Furu, Jean Katambayi Mukendi, Trésor Malaya

Production:



**MAUMAUS**  
Residency Programme

Funded by:



**AFRICA.COM**



Support:

